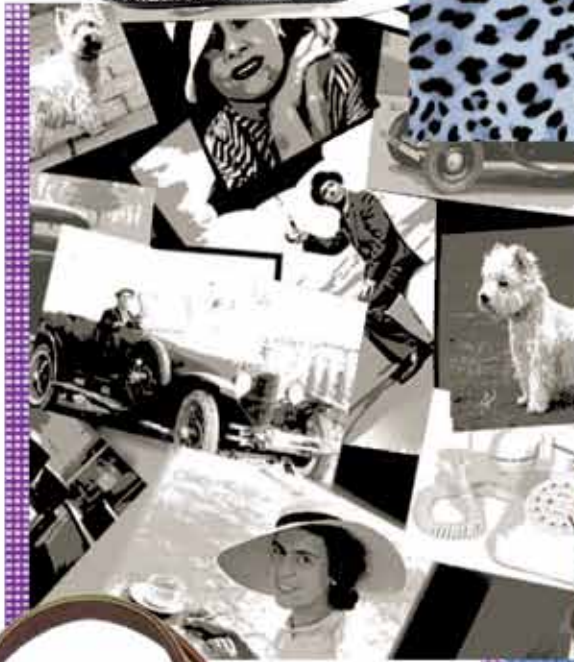




**Decotrans<sup>®</sup>**  
*Art*





**figurates**

Design 57224

cw 032



Design 57843

cw 013



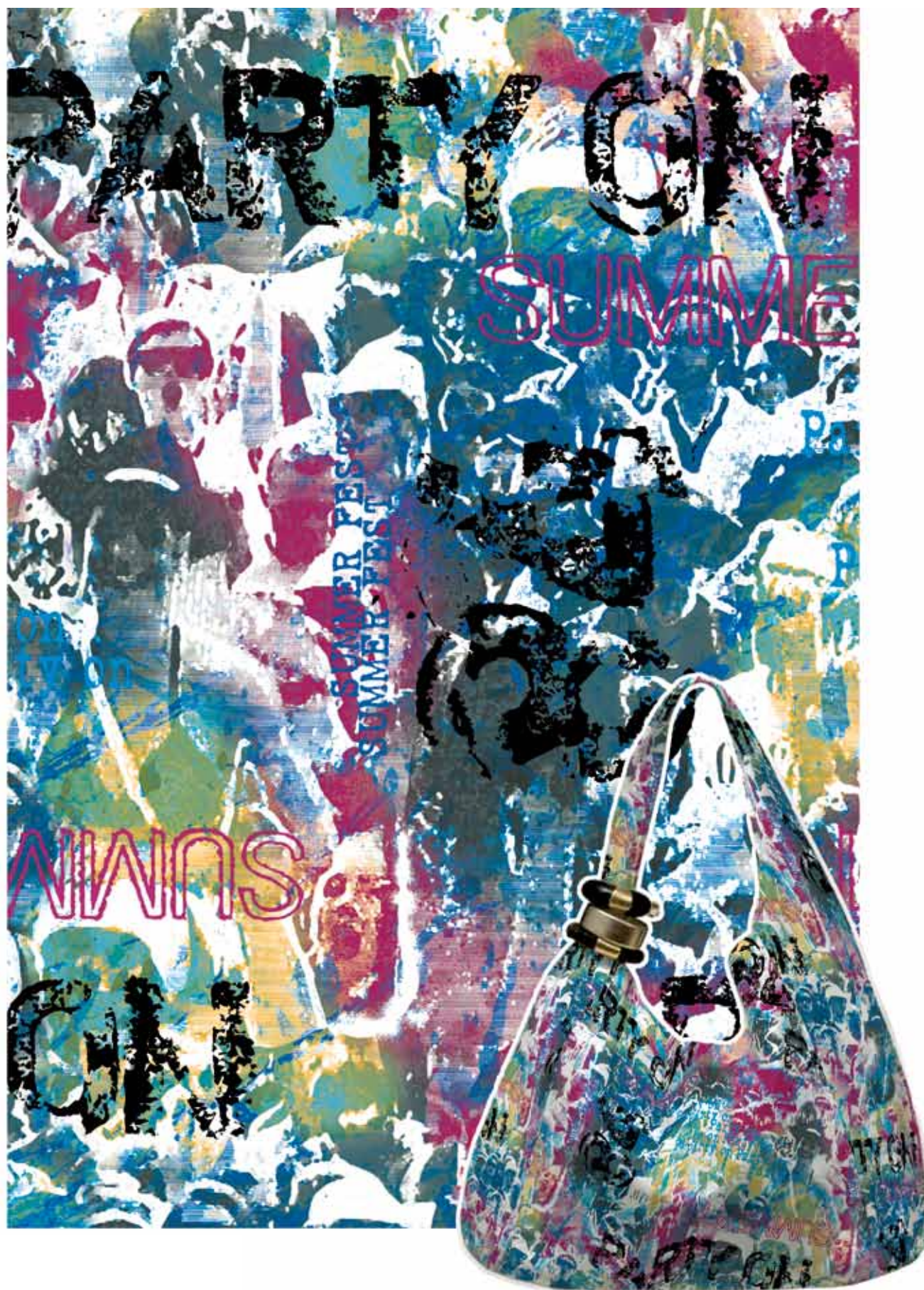
Design 58072

cw 010



Design 58211

cw 001



Design 58225

cw 008



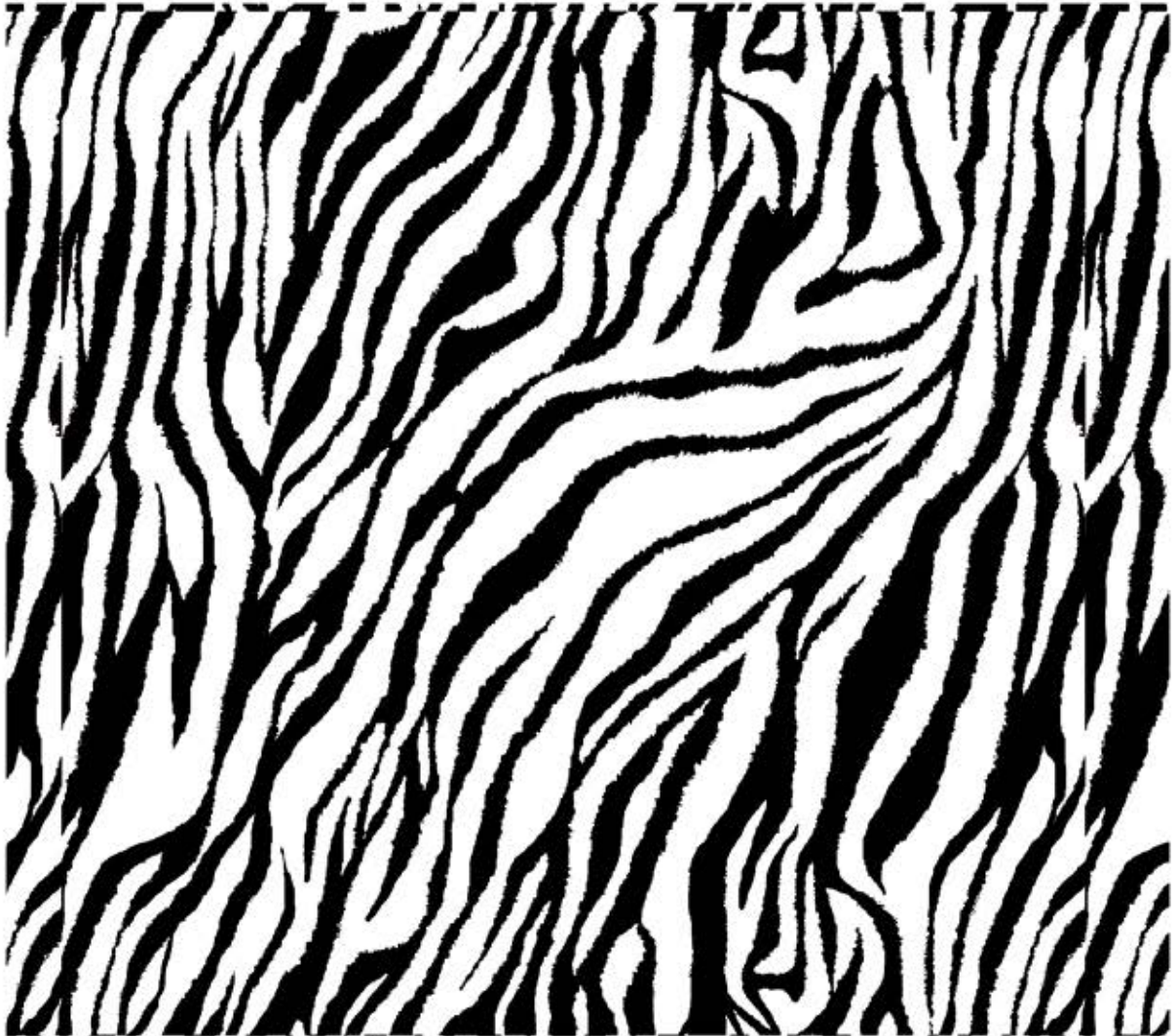




skins

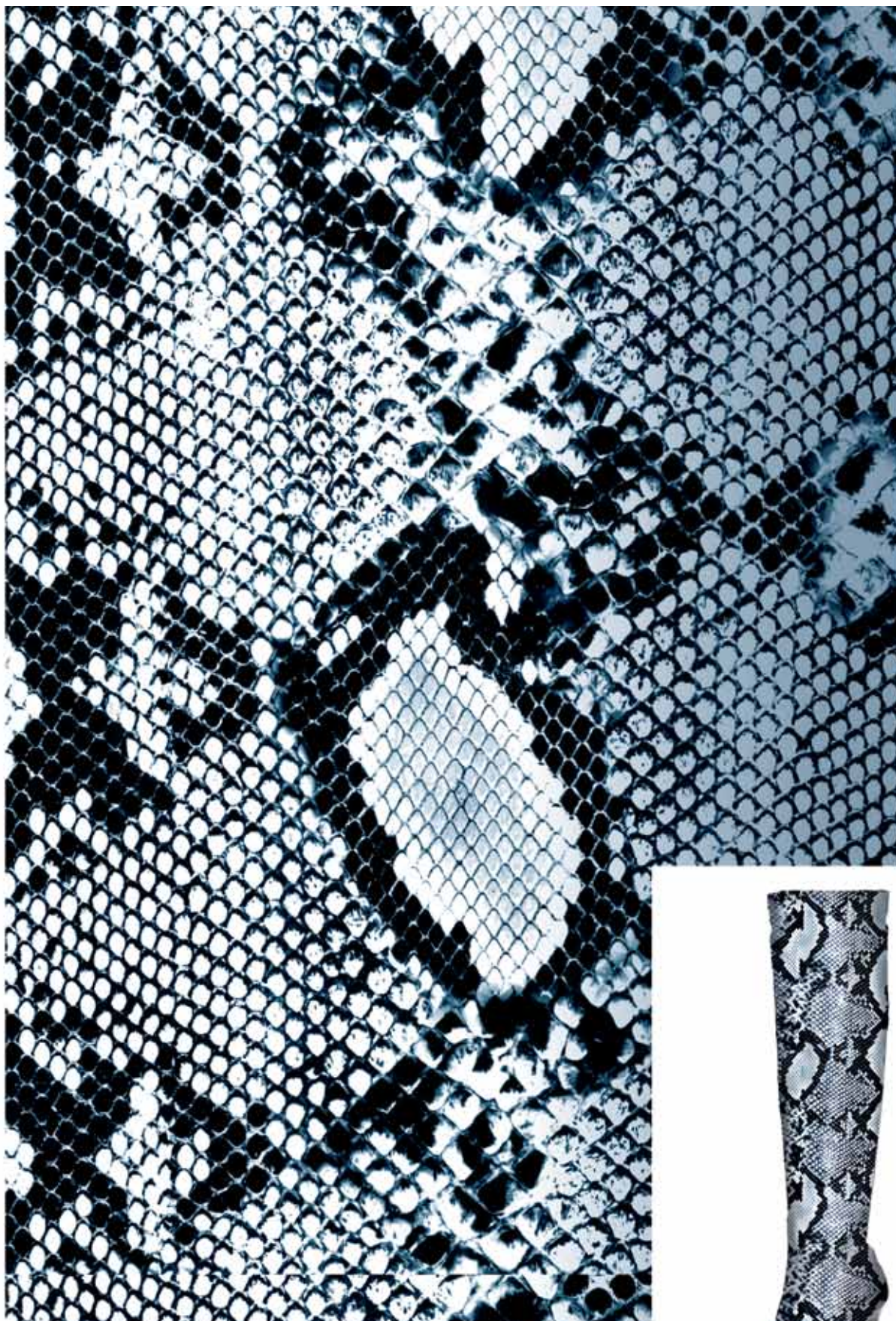
Design 50285

cw 074



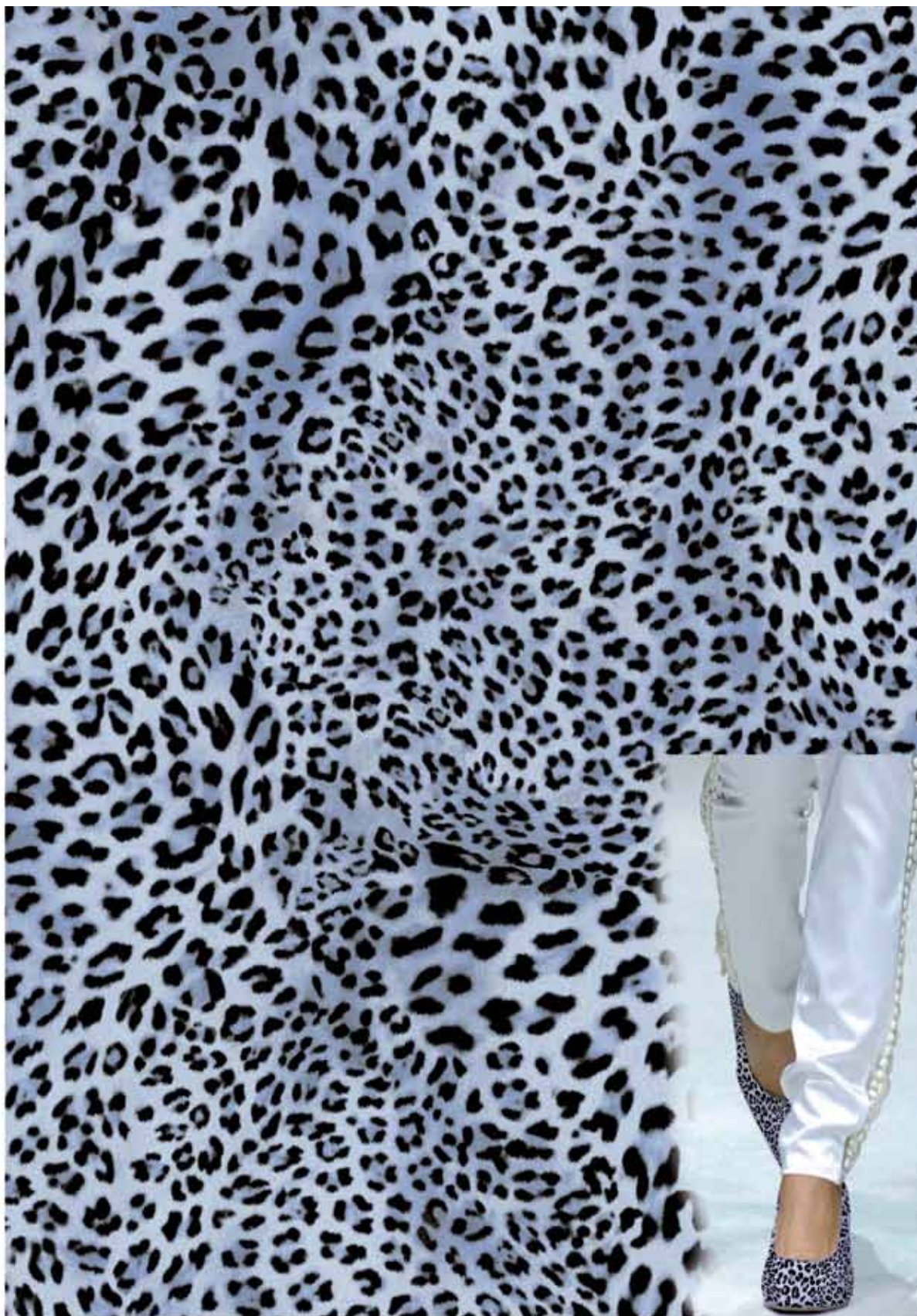
Design 50788

cw 036



Design 53880

cw 327



Design 56395

cw 039



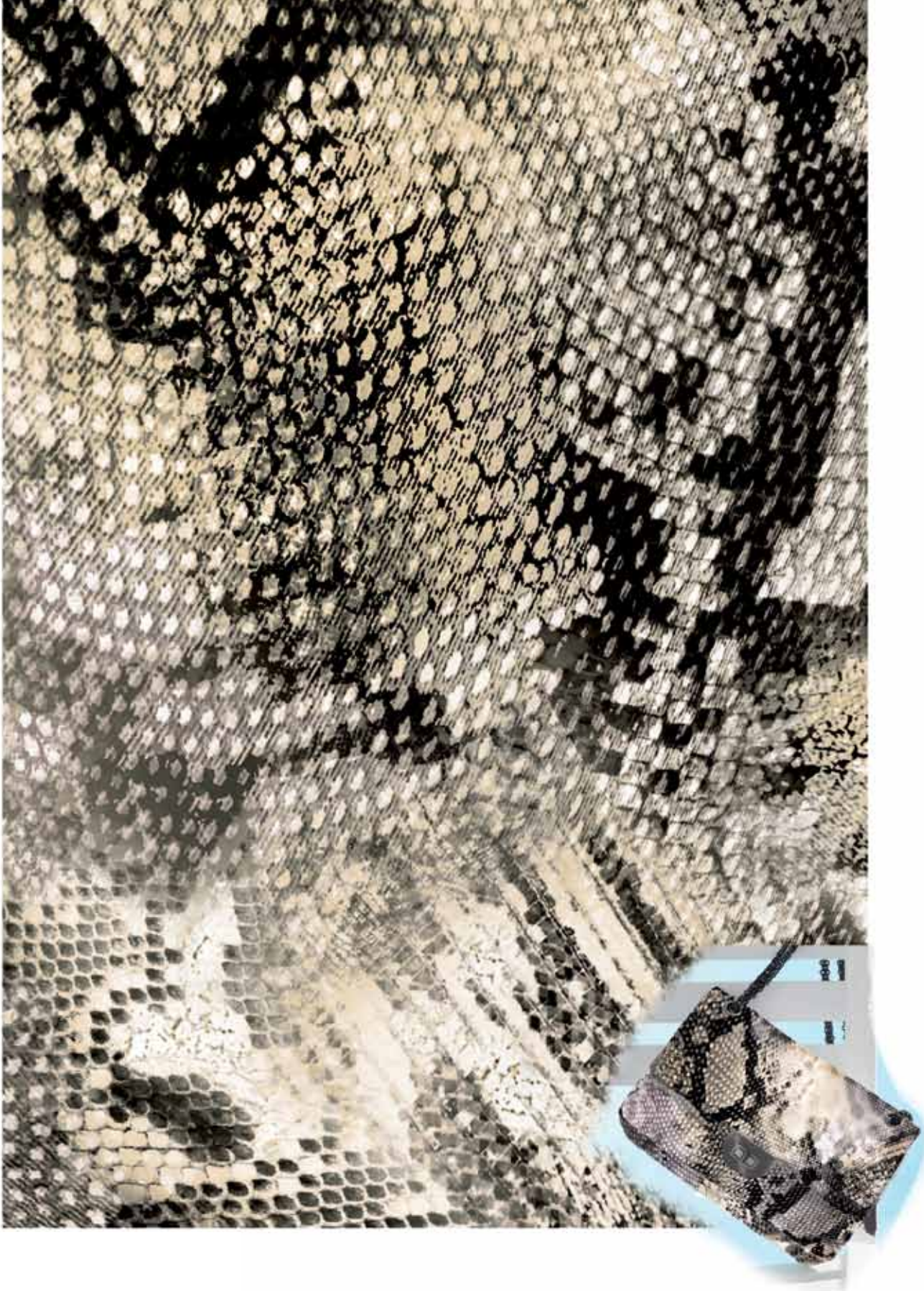
Design 57895

cw 019



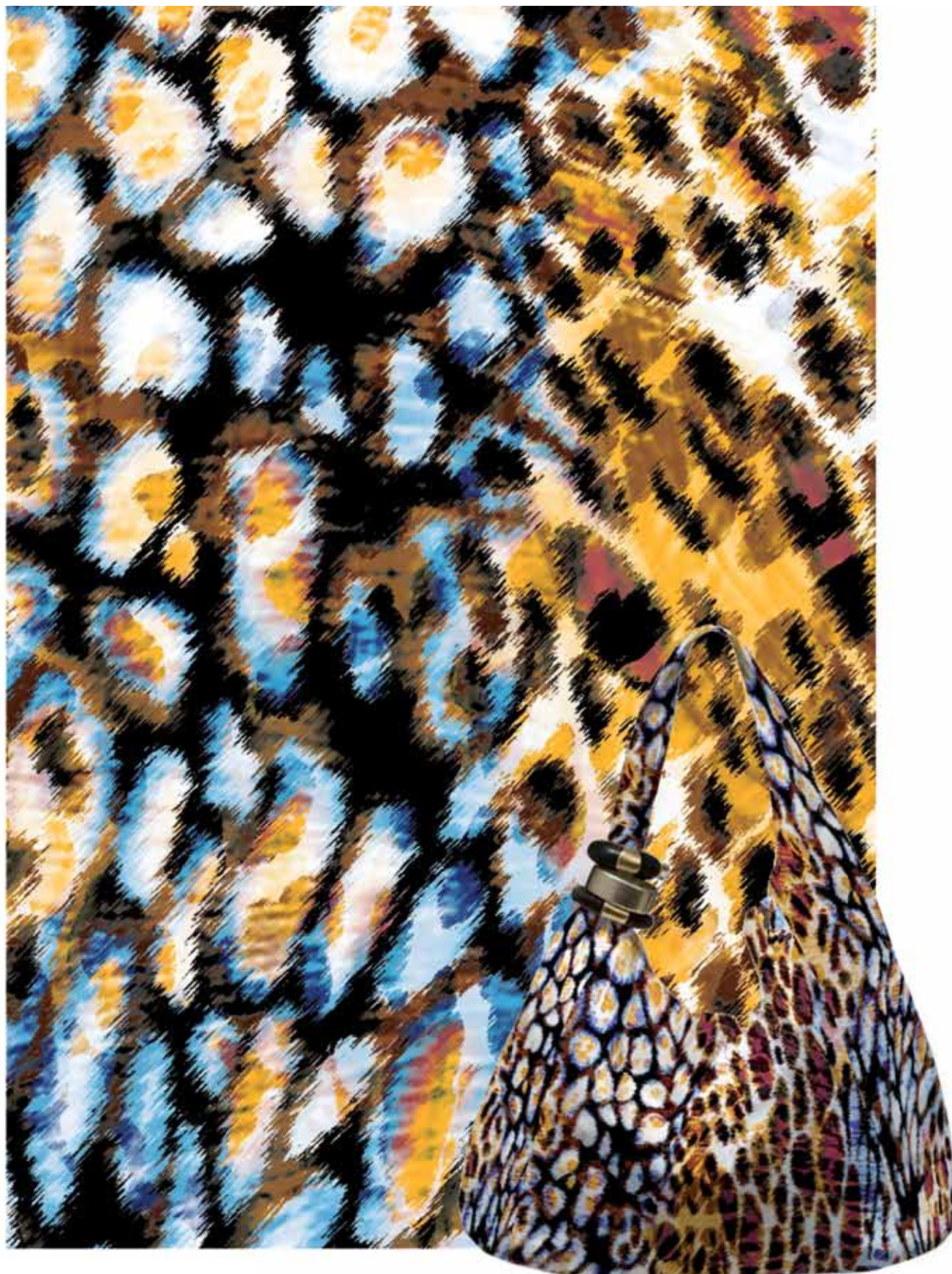
Design 58045

cw 019



Design 58241

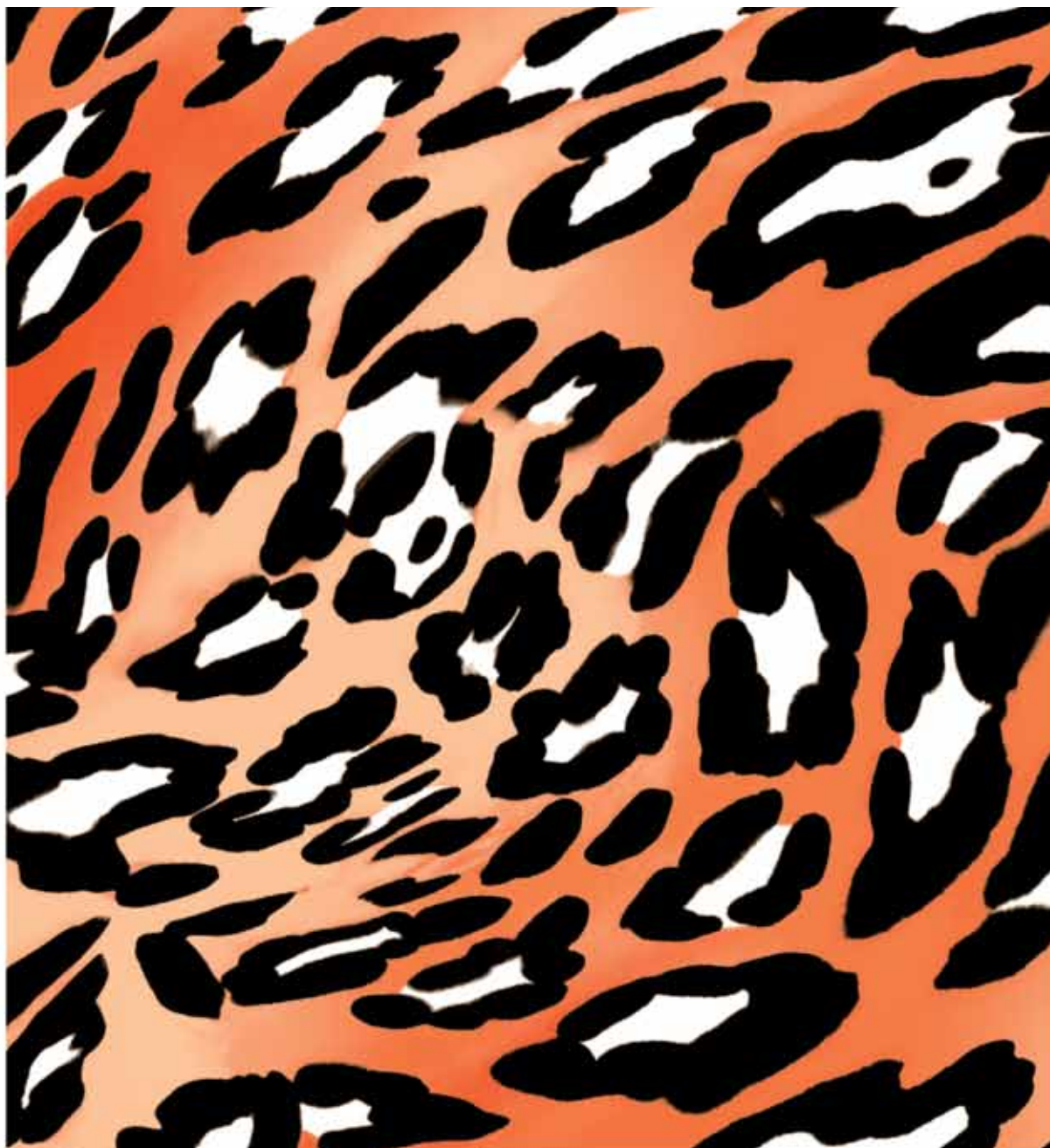
cw 008





Design 58255

cw 013





# fabric effects

Design 50731

cw 123



Design 53435

cw 367



Design 55847

cw 040



Design 57986

cw 020



Design 58201

cw 012



Design 58203

cw 013







# camouflage

Design 51445

cw 362



Design 57995

cw 039





# geometrics

Design 55327

cw 058



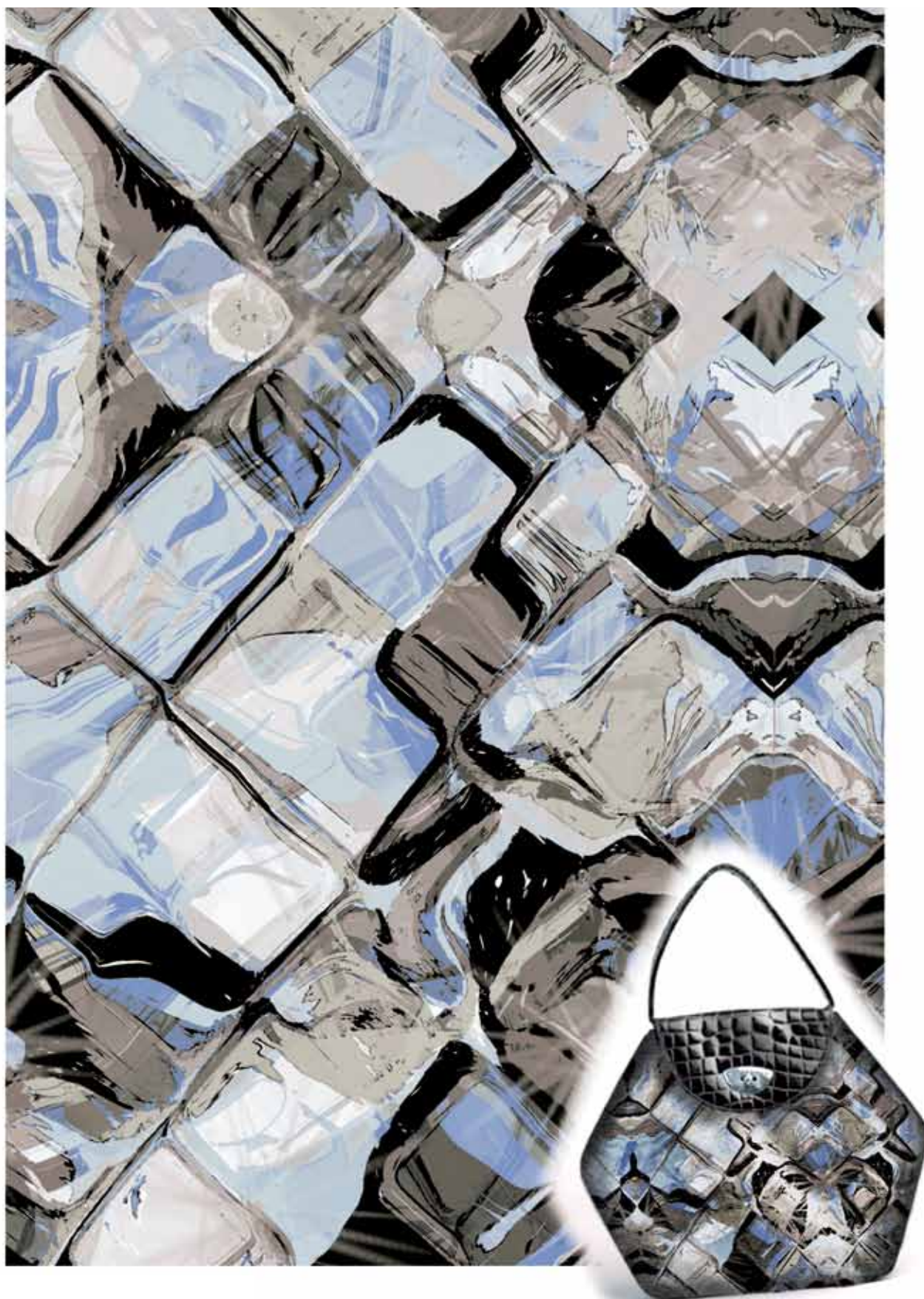
Design 57828

cw 040



Design 58205

cw 020





# flowers



Design 53762

cw 067



Design 54488

cw 161



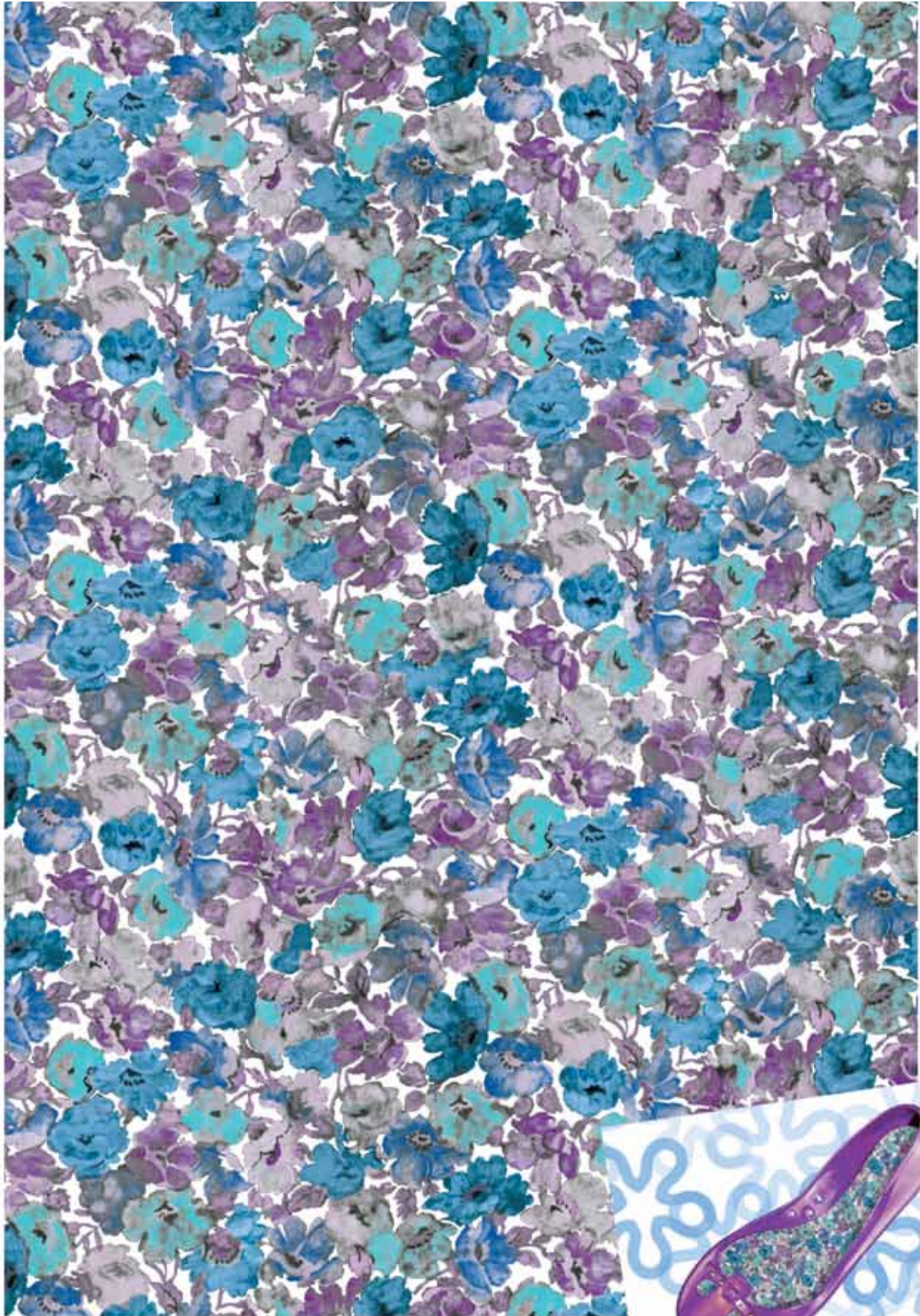
Design 55301

cw 007



Design 57980

cw 068



Design 57982

cw 053



Design 58061 cw 016



Design 58098

cw 018



Design 58111

cw 017





Design 58165

cw 024



Design 58215

cw 007



Design 58233

cw 007



# Decotrans<sup>®</sup> *Art*

## Product Description

Date 18.11.2010

### **DESCRIPTION**

Decorated polypropylene film, according to the type of pigment used for printing:

- PVC / PU
- Leather

### **SUPPORT**

weight basis: 28 g/m<sup>2</sup>  
diameter of the cores: cores 70 to 75 mm  
roll size: 500 mt to 1000 mt

### **PRINTING**

Rotogravure on polypropylene film, treated with vinyl-acrylic ink on acetate base.

### **APPLICATION SYSTEMS**

It's possible to apply the product with calanders. The standard parameters of Sublitex uses for quality control and printing a solid color in production are:

	Temperature	Speed
Calander	130-160 [°C]	6-11 [m/min]

It is recommended to optimize the operating conditions through the testing of parameters in the actual production, depending on the means of transfer and support to ennoble.

# Decotrans<sup>®</sup> *Art*

MIROGLIO TEXTILE S.r.l.  
Strada Tagliata, 18 - 12051 Alba - CN - Italy  
w. [www.sublitex.com](http://www.sublitex.com) m. [sublitex@miroglio.com](mailto:sublitex@miroglio.com)  
t. (+39) 0173 298111 f. (+39) 0173 298220

